

HIW-SMS-001_EN_LS



WARNING

Do not use the stacker before reading and understanding this operating instructions.

NOTE!

Keep for future reference.

ISO9001

ISO14001



Operating Instructions / Parts List

HIW ELECTRIC PLATFORM

Date: 2012.5

ATTENTION:

1. Environmentally hazardous waste, such as batteries and electronics, will have a negative effect on the environment, or health, if handled incorrectly.
2. The waste packages should be sorted and put into solid dustbins according to the materials and be collected disposal by local special environment protection bureau. To avoid pollution, it's forbidden to throw away the wastes randomly.
3. To avoid leaking during the use of the products, the user should prepare some absorbable materials (scraps of wooden or dry duster cloth) to absorb the leaking oil in time. To avoid second pollution to the environment, the used absorbable materials should be handed in to special departments in terms of local authorities.

NOTE: All of the information reported herein is based on data available at the moment of printing. We reserve the right to modify our own products at any moment without notice and incurring in any sanction. So, it is suggested to always verify possible updates.

Welcome to use our electrical lift table. This lift table is made of high quality steel and is designed to give a durable, reliable and easy to use. For your safety and correct operation, please carefully read this instruction and warnings on the lift table before using it.

1. SPECIFICATIONS

TYPE		HIW1.0EU	HIW2.0EU	HIW4.0EU	HIW3.0EU
Capacity	kg	500	1000	2000	3000
Max. height	mm	1010	1010	1010	1020
Min.height	mm	190	190	190	220
Dimension of the table	mm	1300x800	1300x800	1300x800	1300x800
Lifting speed	S	15	26	40	26
Lower speed	S	13	20	30	22
Pump electric current	L/min	3	3	3	5
Oil tank	L	2	2	3	3
Pump station		AC3x380, 750W	AC3x380V, 750W	AC3x380V, 750W	AC3x380V 1500W
weight	Kg	160	220	280	320

2. SAFETY GUIDANCE

Operator should read all warning signs on the truck and instructions here before using it.

Do not put foot and hand under the scissors, injury could happen.

Do not enter under table.

Do not overload.

Do not use it on slope, lift table may become uncontrollable and create danger.

Do not lift persons. People could fall down and suffer severe injury.

Do not side or end load .Load must be distributed on at least 80% of the table area

The table should be maintained by the professional operator.

Keep watching the condition of load, stop operating lift table if load becomes unstable.

Check and maintain the lift table regularly.

Do not use the lift table continuously, the pump station would be damaged.

Stop operating the lift table if the temperature of the oil is too high.

The table should be lowered to the bottom if the lift table is not used.

3. OPERATING GUIDANCE

Emergency switch

When you press down this switch, it will switch off the power, and then you turn it clockwise, it will switch on the power.

Lifting switch

When you press down this switch, the table will lift; when you loose your hand, the table will stop lifting.

Lowering switch

When you press down this switch, the table will be lowering; when you loose your hand, the table will stop lowering.

The table can not lift or lower when the function of safety protection frame starts. When you press down the lifting or lowering switch, the table will lift or lower again.

4. MAINTENCE

Hydraulic oil

Please check the oil level every six months. The oil can be hydraulic oil: ISO VG 32(GB11118-89), its viscosity should be 32cSt at 40°C, total volume is about 4.0lt.

Daily check and maintenance

It is necessary to check the truck daily. Special attention should be paid to the rollers, the axles, as thread, rags, etc., it may block the rollers; the scissors and the table should be checked, they may be deformed; the table should be unloaded and lowered in the lowest position when the job is over.

Lubrication

Use motor oil or grease to lubricate all movable parts.

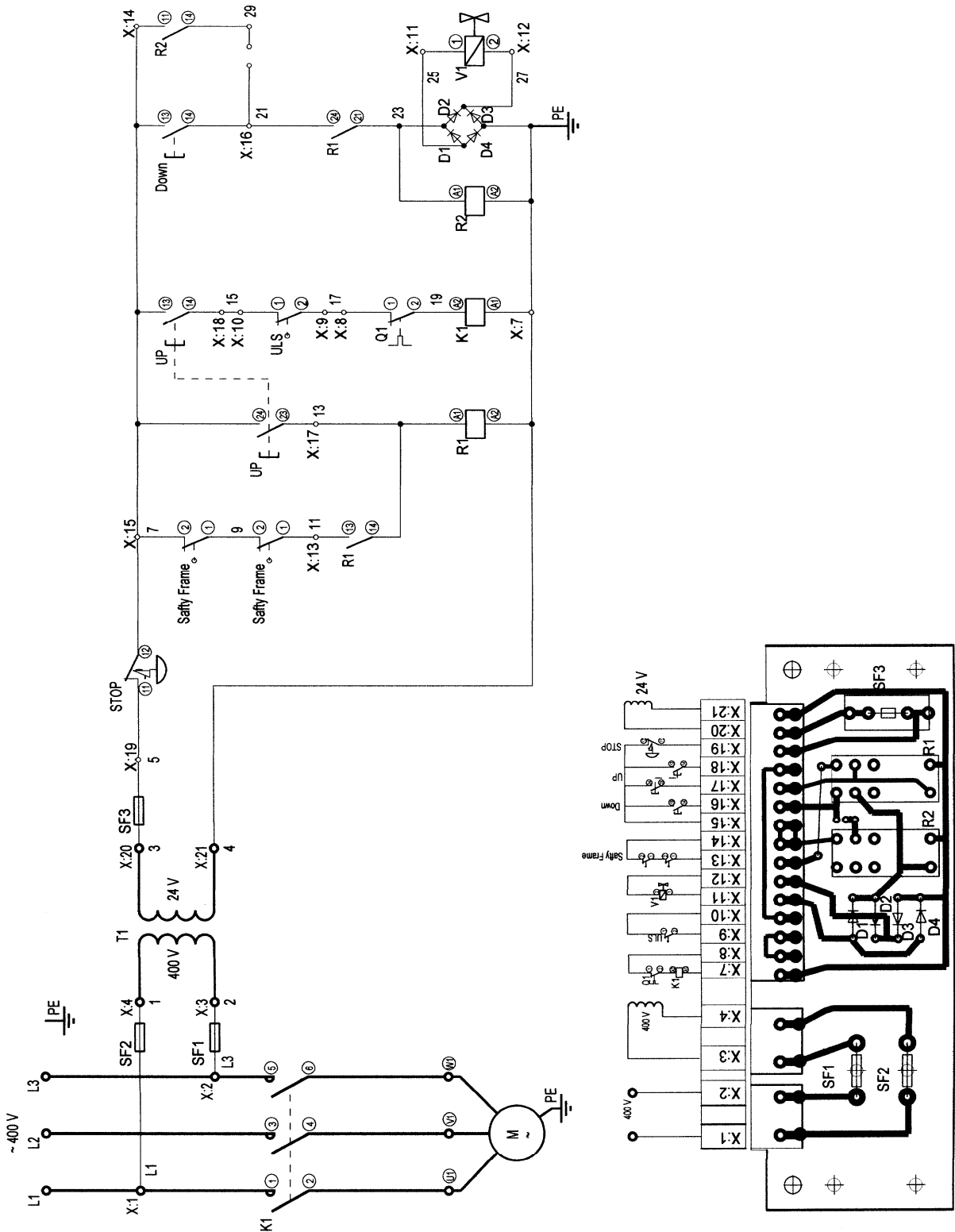
5. TROUBLES SHOOTING

NO	TROUBLE	CLAUSE	FIXING METHODS
1	The table can not be up the max. height	-The hydraulic oil is not enough -The position of the travel switch	-Pour in the oil -Adjust the position of travel switch
2	The table can not lift.	-Without hydraulic oil. -safety valve has no enough pressure.	-Pour in the oil -Adjust the safety valve.
3	The motor cannot run	-The emergency switch is turned off -The connection of electrical wire is loose. -The contactor of DC motor is damaged.	-Turn the emergency switch clockwise; -Tight it; -Replace it with a new one
4	The table cannot descend	-The piston rod or cylinder is deformed resulting from partial loading slanting to one side or over-loading. -The fork was kept in the high position for long time, which cause piston rod bared to arise in rusting and jamming of the rod. -The release valve of pump can not work because of abrasion	-Replace the piston rod or cylinder with new one -Keeping the fork in the lowest position if not using, and pay more attention to lubricate the piston rod. -Replace with new one
5	Leaks	-Sealing parts worn or damaged. -Some parts cracked	-Replace with new one -Replace with new one
6	The fork descends without the release valve worked	-The impurities in the oil cause the release valve to be unable to close tight. -Sealing parts worn or damaged. -The release valve is damaged.	-Replace with new oil. -Replace with the new one -Replace with the new one

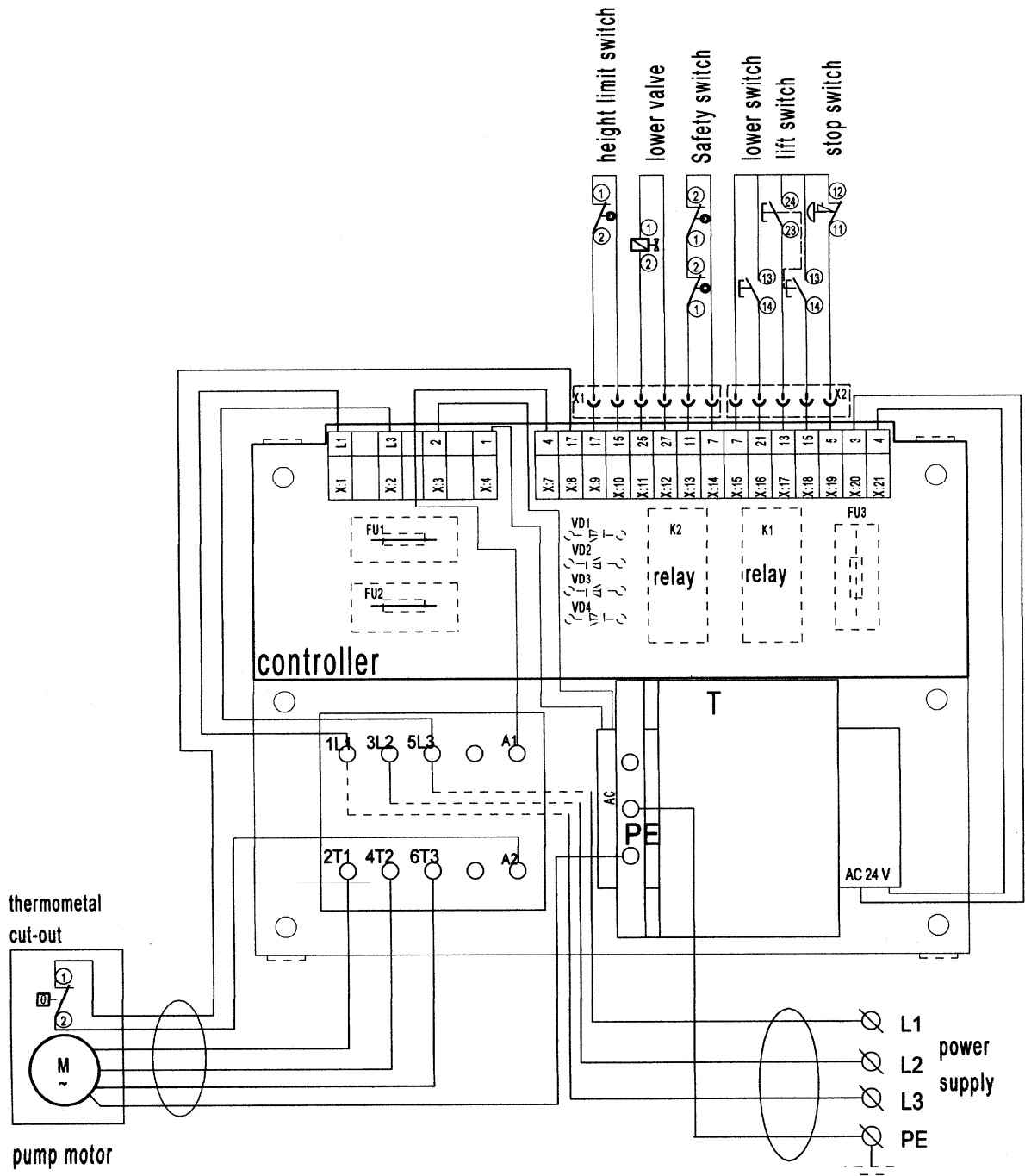
NOTE: Do not attempt to repair the truck unless you are trained and authorized.

6. ELECTRICAL SYSTEM

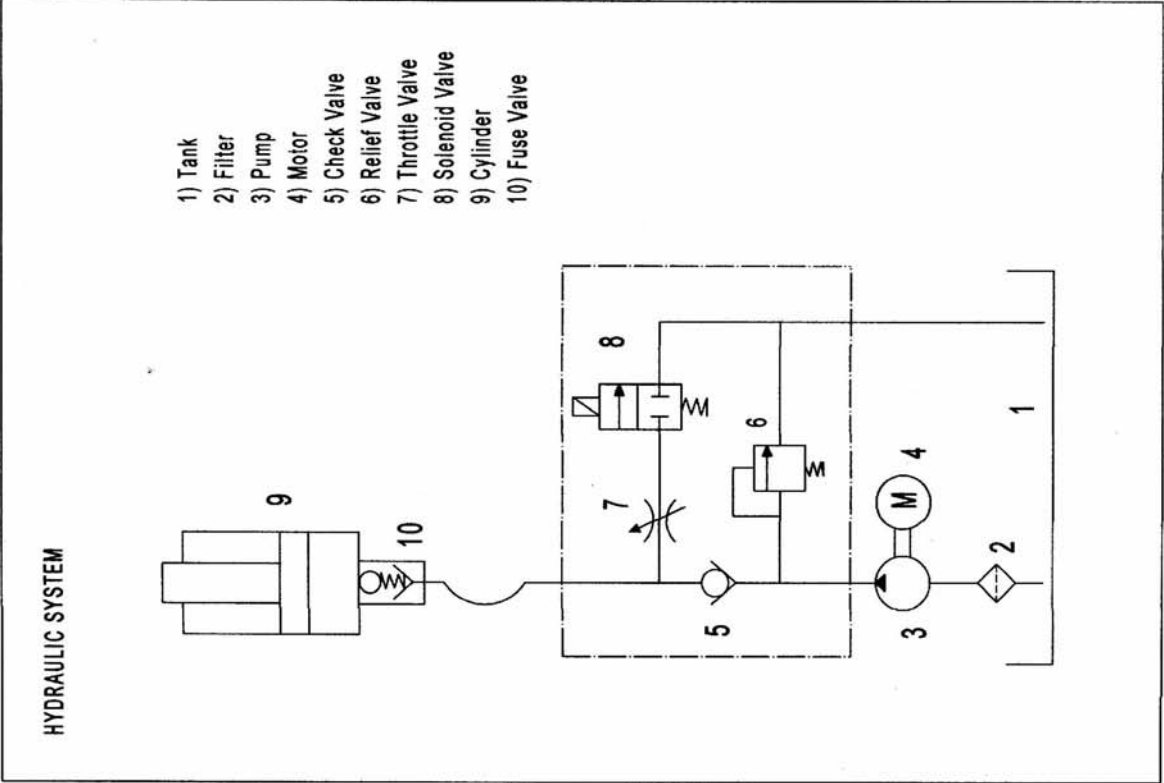
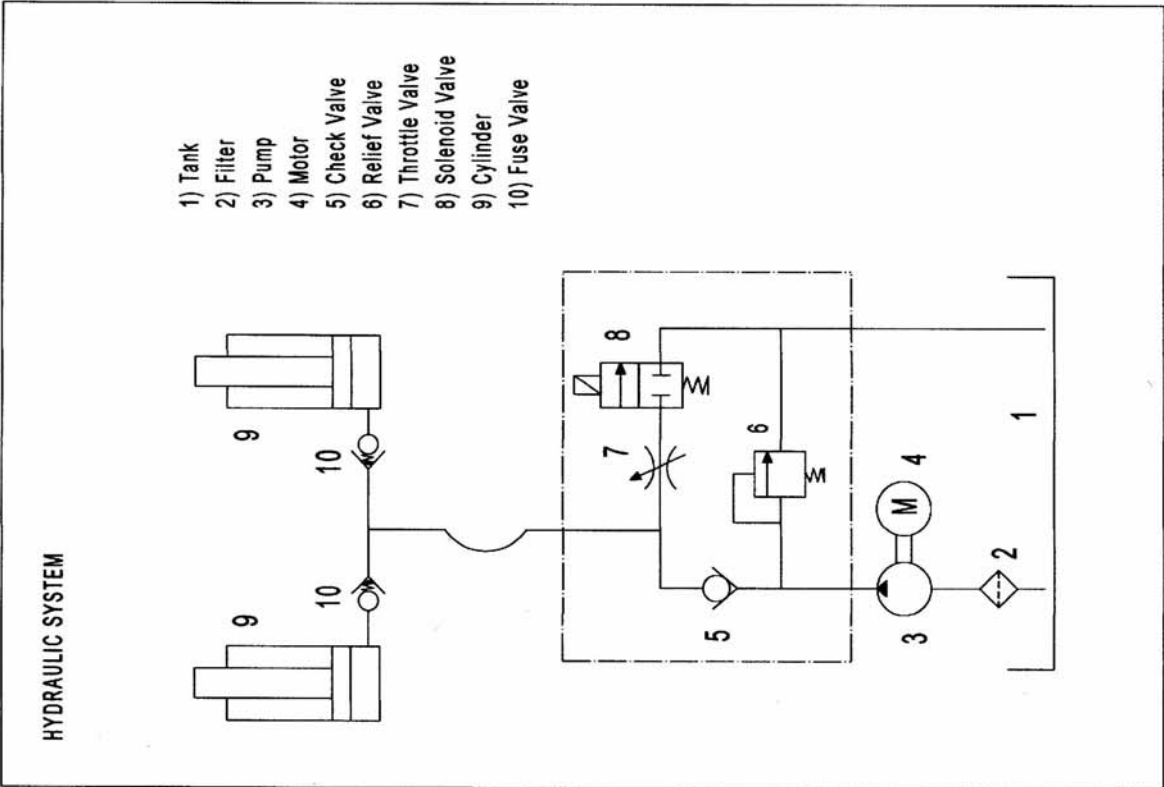
6.1 CIRCUIT DIAGRAM



6.2 CONNECTION DIAGRAM

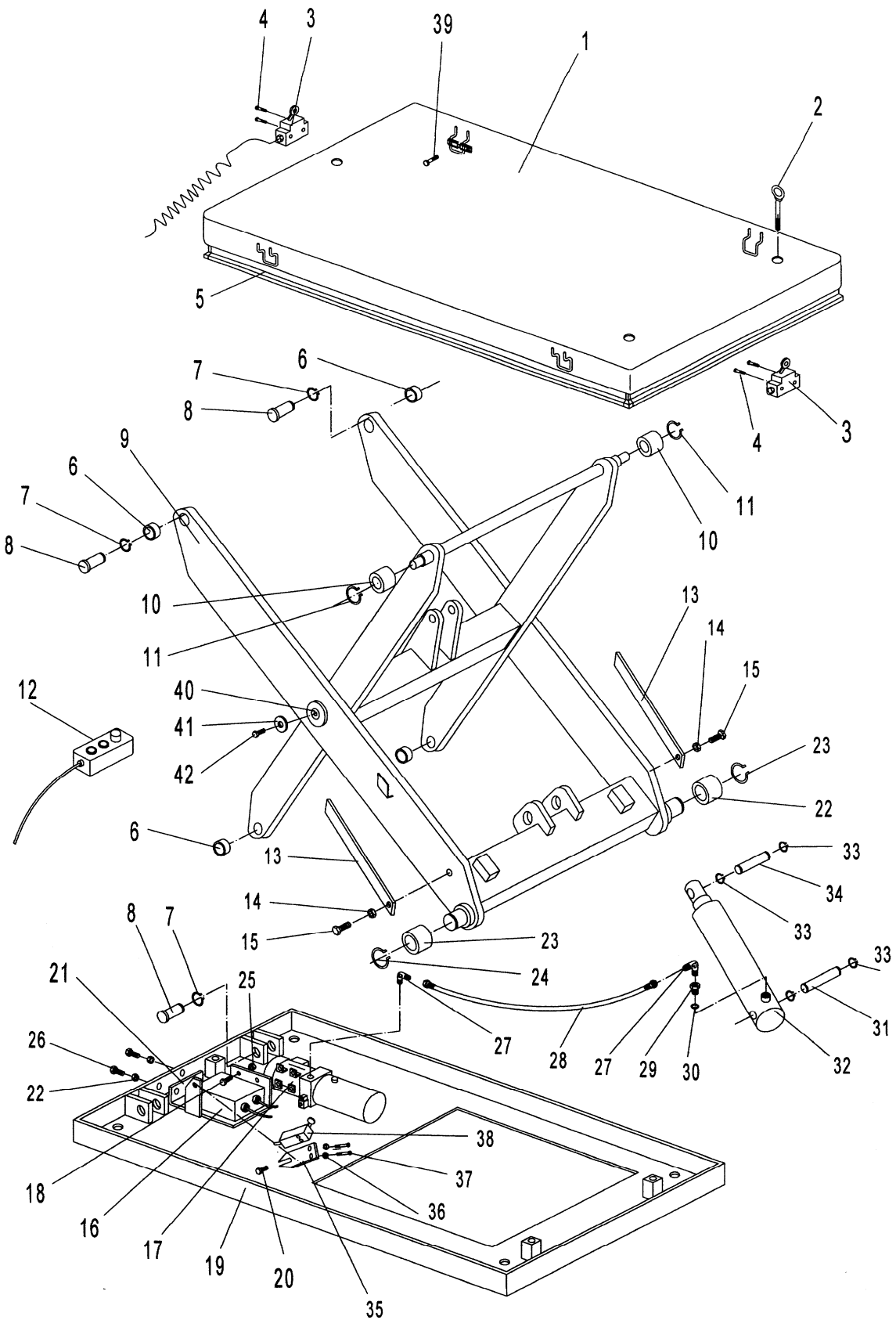


7. Hydraulic System



8. Parts List

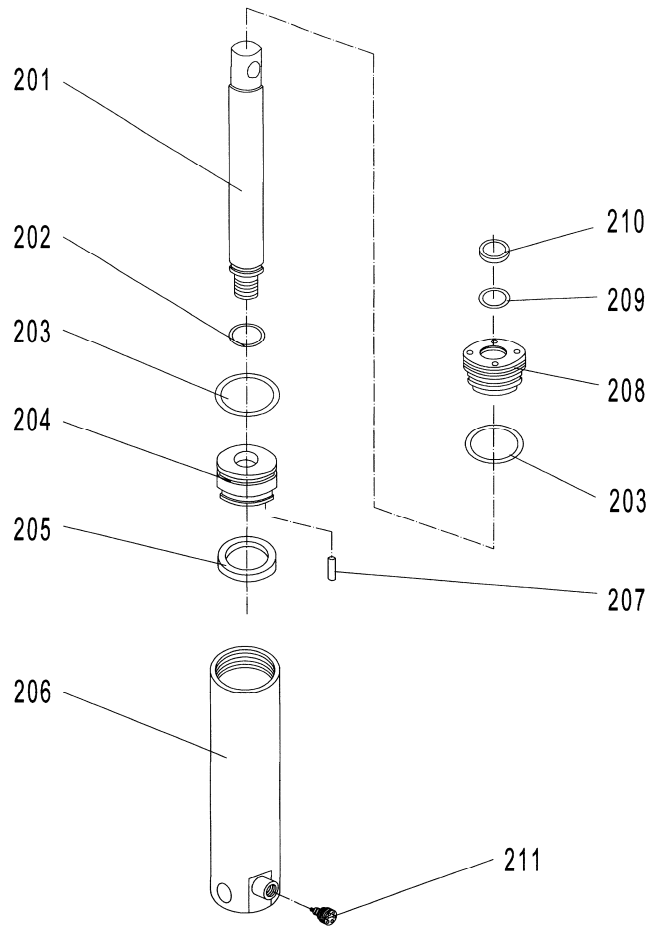
8.1 HIW1.0EU (1000LBS/500KG)



HIW1.0EU: Table (1000LBS/500KG)

No	Description	Qty.	No	Description	Qty.
1	Table	1	22	Nut	2
2	Bolt	3	23	Roller	2
3	Microswitch	2	24	Retaining Ring	2
4	Bolt	4	25	Nut	4
5	Safety Border	1	26	Screw	2
6	Bushing	4	27	90°Curve	2
7	Retaining Ring	4	28	pipe	1
8	Shaft	4	29	Reduction	1
9	Fork Arm	1	30	Seal Washer	1
10	Roller	2	31	Shaft	1
11	Retaining Ring	2	32	Cylinder	1
12	Control switch	1	33	Retaining Ring	4
13	Support Plank	2	34	Shaft	1
14	Nut	2	35	Plank	1
15	Screw	2	36	Nut	2
16	chopper	1	37	Bolt	2
17	Pump	1	38	Microswitch	1
18	Screw	4	39	Bolt	4
19	Bottom plank	1	40	Shaft	1
20	Bolt	1	41	Washer	2
21	Connect Plank	1	42	Screw	2

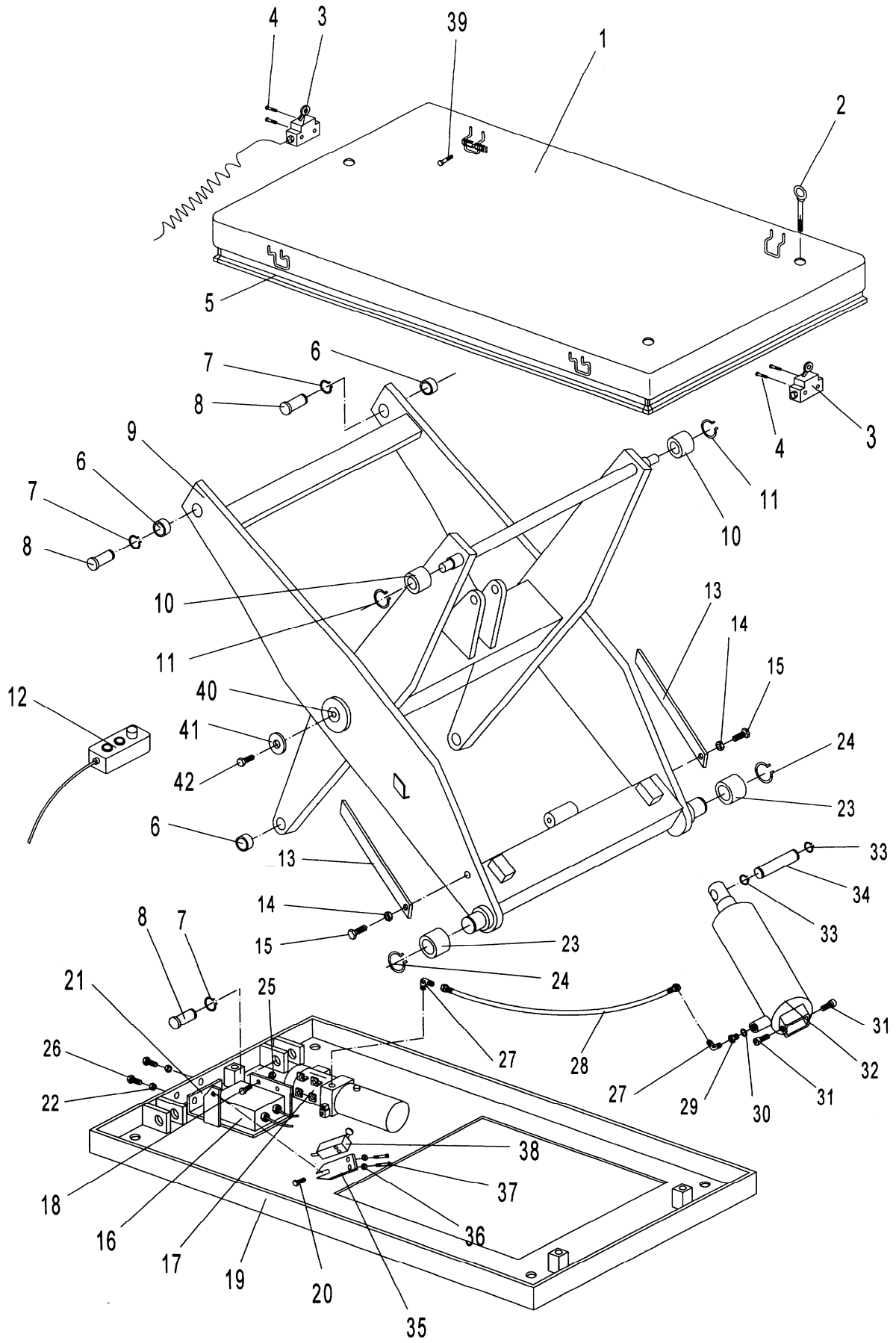
PART LIST OF THE CYLINDER of HIW1.0EU (1000LBS/500KG)



32

No.	Description	Qty.	No.	Description	Qty.
201	Piston rod	1	207	Pin	1
202	O ring	1	208	Pump cover	1
203	O ring	2	209	Y seal ring	1
204	Piston	1	210	Dust ring	1
205	Y seal ring	1	211	Safety Valve	1
206	Pump body	1			

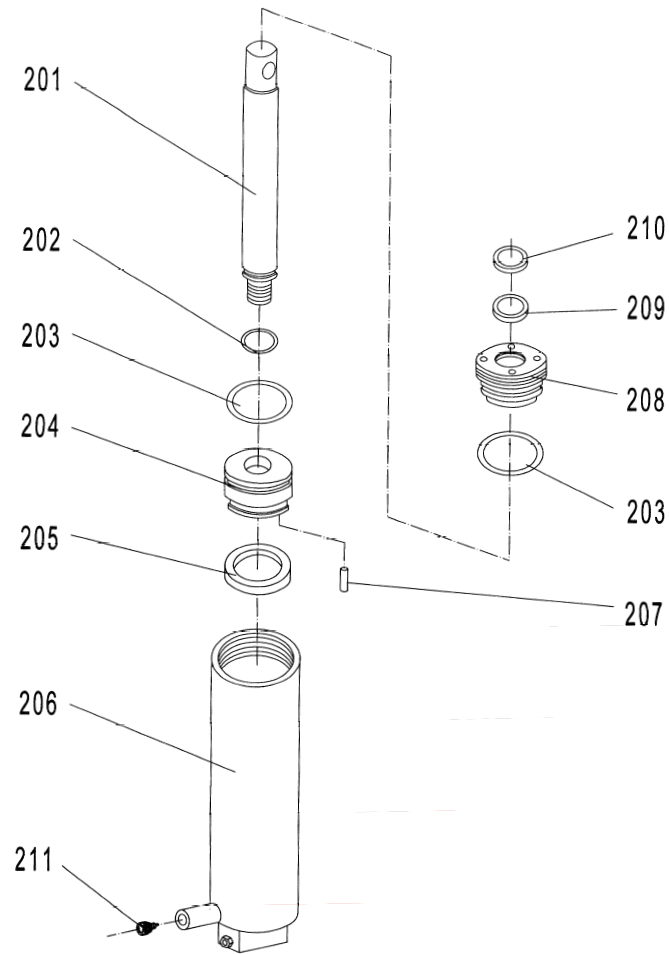
8.2 HIW2.0EU (2000LBS/1000KG)



PART LIST OF THE TABLE: HIW2.0EU (2000LBS/1000KG)

No	Description	Qty.	No	Description	Qty.
1	Table	1	22	Nut	2
2	Bolt	3	23	Roller	2
3	Microswitch	2	24	Retaining Ring	2
4	Bolt	4	25	Nut	4
5	Safety Border	1	26	Screw	2
6	Bushing	4	27	90°Curve	2
7	Retaining Ring	4	28	Hose	1
8	Shaft	4	29	Reduction	1
9	Fork Arm	1	30	Seal Washer	1
10	Roller	2	31	Screw	2
11	Retaining Ring	2	32	Cylinder	1
12	Control switch	1	33	Retaining Ring	4
13	Support Plank	2	34	Shaft	1
14	Nut	2	35	Plank	1
15	Screw	2	36	Nut	2
16	chopper	1	37	Bolt	2
17	Pump	1	38	Microswitch	1
18	Screw	4	39	Bolt	4
19	Bottom plank	1	40	Shaft	1
20	Bolt	1	41	Washer	2
21	Connect Plank	1	42	Screw	2

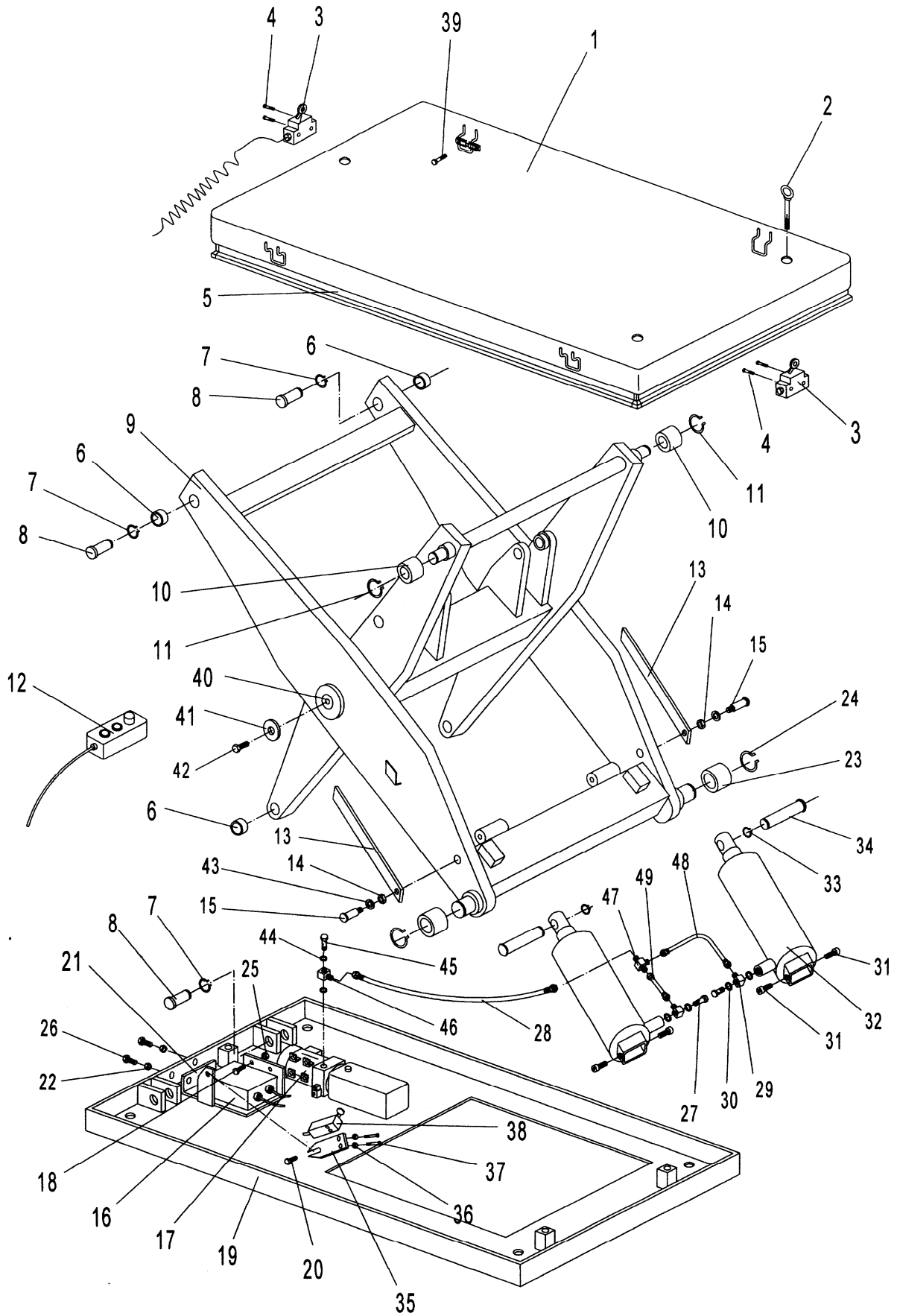
PART LIST OF THE CYLINDER of HIW2.0EU (2000LBS/1000KG)



32

No	Description	Qty.	No	Description	Qty.
201	Piston Rod	1	207	Pin	1
202	O-Ring	1	208	Cylinder Cap	1
203	O-Ring	2	209	Y-Seal	1
204	Piston	1	210	Dust Ring	1
205	Y-Seal	1	211	Safety Valve	1
206	Housing	1			

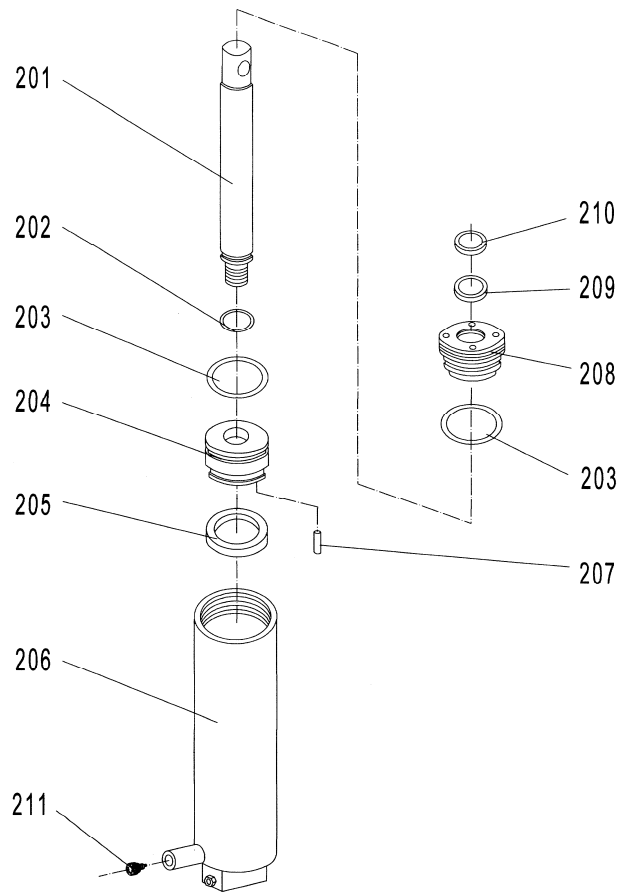
8.3 HIW4.0EU (4000LBS/2000KG)



PART LIST OF THE TABLE: HIW4.0EU (4000LBS/2000KG)

No	Description	Qty.	No	Description	Qty.
1	Table	1	26	Screw	2
2	Bolt	3	27	Hollow Screw	2
3	Microswitch	2	28	Hose	1
4	Bolt	4	29	Square Joint	2
5	Safety Border	1	30	Seal Washer	4
6	Bushing	4	31	Screw	4
7	Retaining Ring	4	32	Cylinder	2
8	Shaft	4	33	Retaining Ring	2
9	Fork Arm	1	34	Shaft	2
10	Roller	2	35	Plank	1
11	Retaining Ring	2	36	Nut	2
12	Control switch	1	37	Bolt	2
13	Support Plank	2	38	Microswitch	1
14	Nut	2	39	Bolt	4
15	Screw	2	40	Shaft	1
16	chopper	1	41	Washer	2
17	Pump	1	42	Screw	2
18	Screw	4	43	Washer	2
19	Bottom plank	1	44	Seal Washer	2
20	Bolt	1	45	Hollow Screw	1
21	Connect Plank	1	46	Square Joint	1
22	Nut	2	47	Connection	1
23	Roller	2	48	Pipe	1
24	Retaining Ring	2	49	Pipe	1
25	Nut	4			

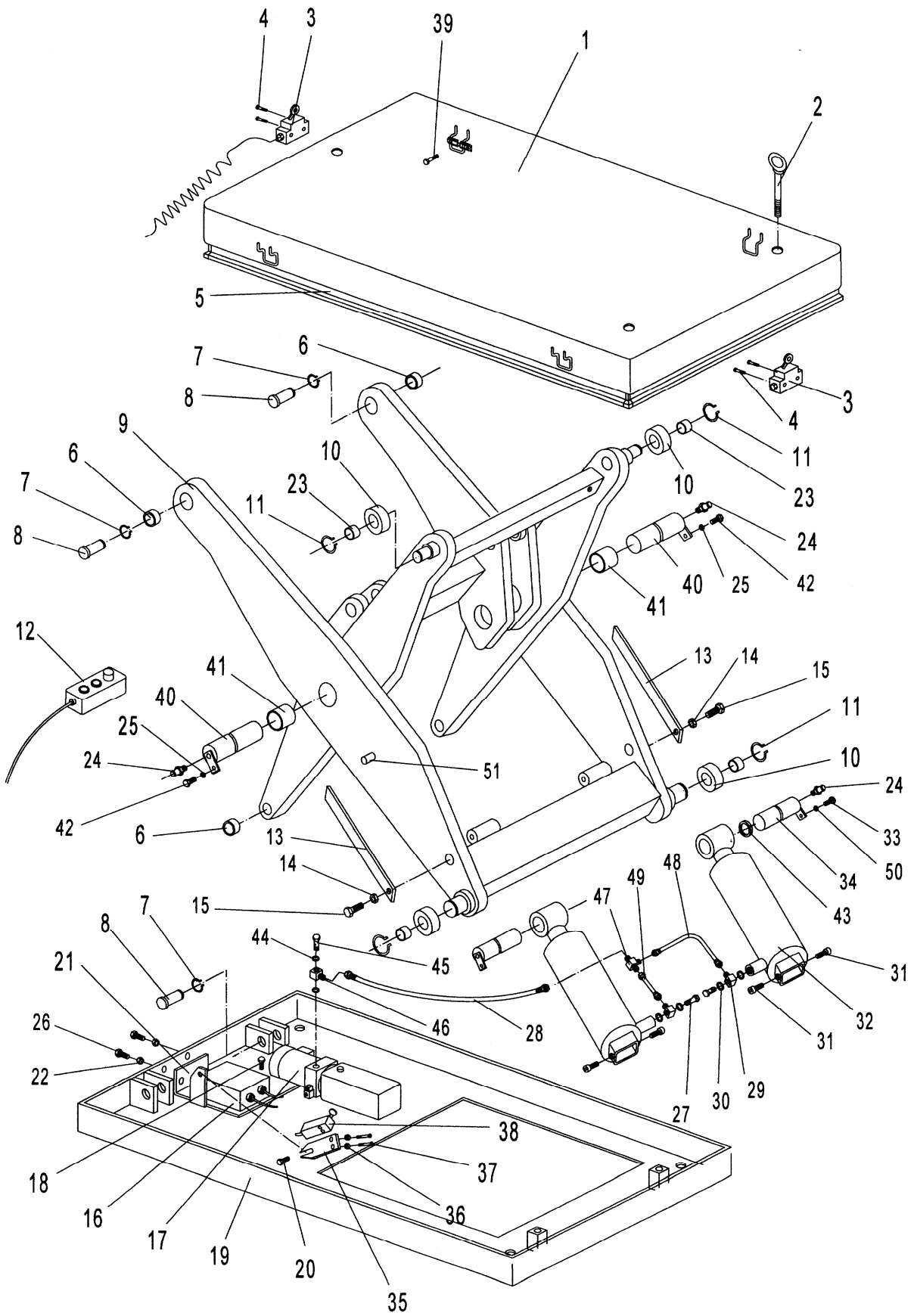
PART LIST OF THE CYLINDER of HIW4.0EU (4000LBS/2000KG)



32

No	Description	Qty.	No	Description	Qty.
201	Piston Rod	1	207	Pin	1
202	O-Ring	1	208	Cylinder Cap	1
203	O-Ring	2	209	Y-Seal	1
204	Piston	1	210	Dust Ring	1
205	Y-Seal	1	211	Safety Valve	1
206	Housing	1			

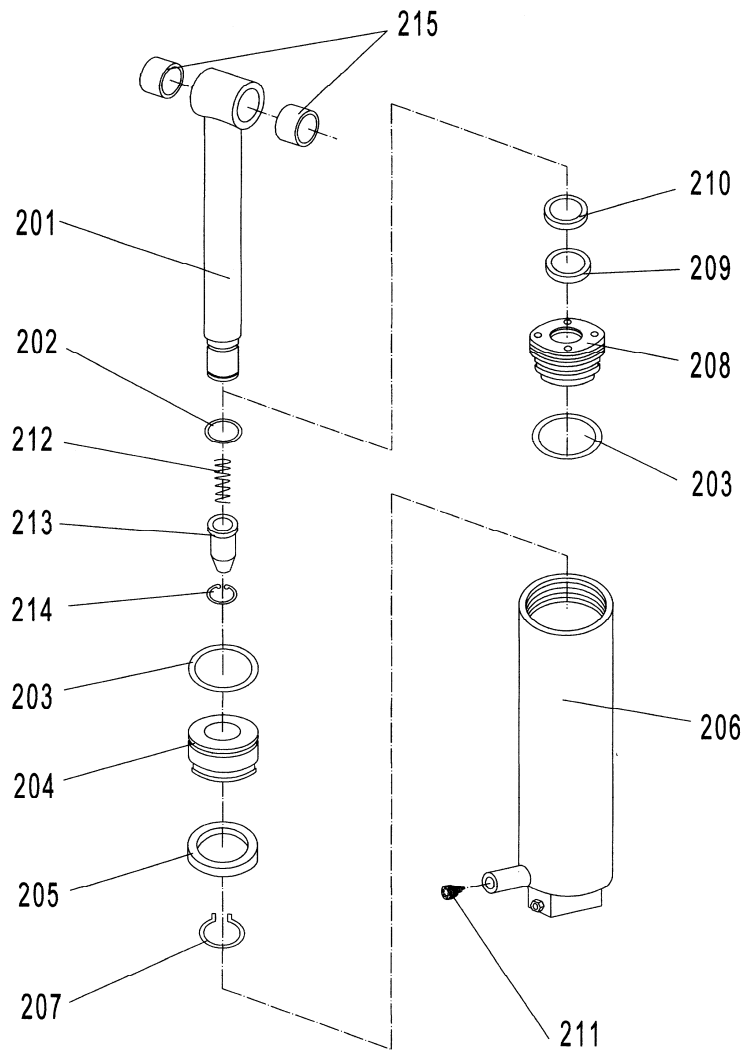
8.4 HIW3.0EU (6000LBS/3000KG)



PART LIST OF THE TABLE: HIW3.0EU (6000LBS/3000KG)

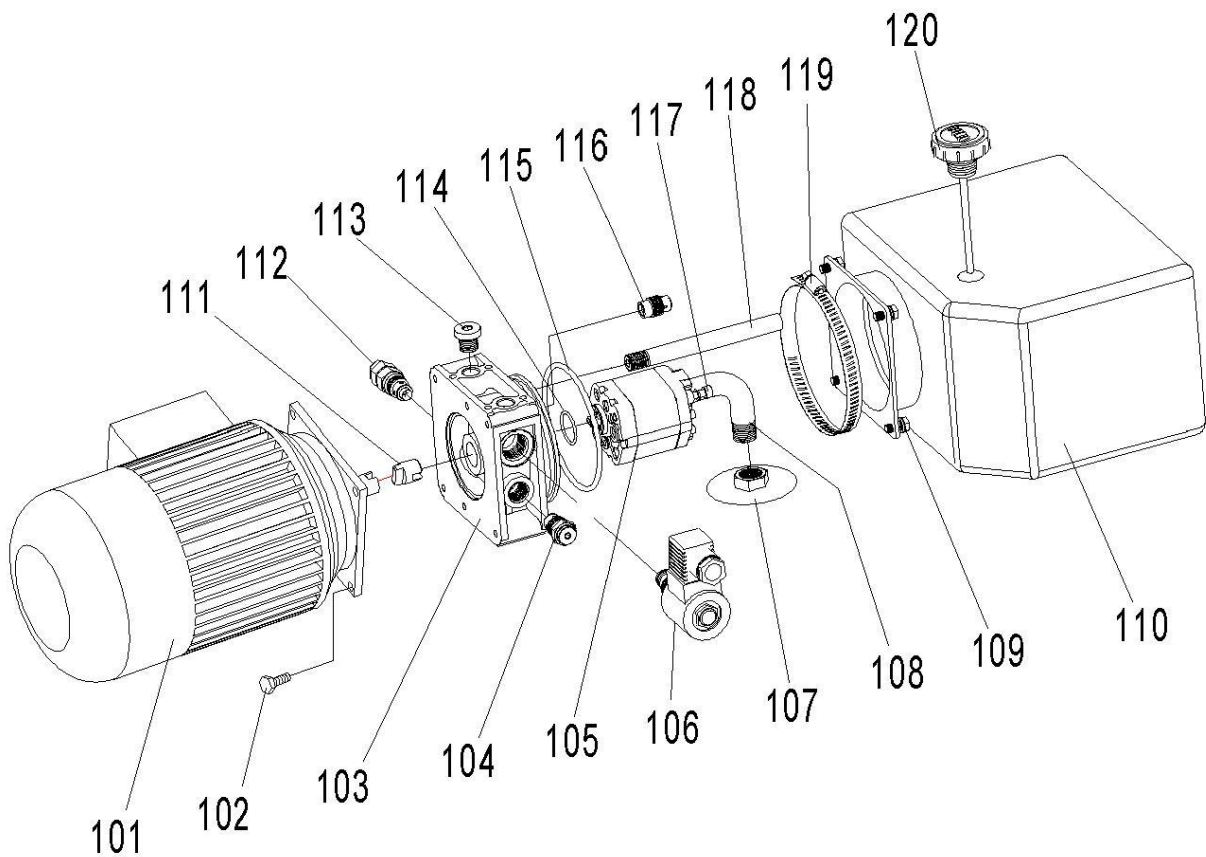
No	Description	Qty.	No	Description	Qty.
1	Table	1	27	Hollow Screw	2
2	Bolt	3	28	Hose	1
3	Microswitch	2	29	Square Joint	2
4	Bolt	4	30	Seal Washer	4
5	Safety Border	1	31	Screw	4
6	Bushing	4	32	Cylinder	2
7	Retaining Ring	4	33	Screw	2
8	Shaft	4	34	Shaft	2
9	Fork Arm	1	35	Plank	1
10	Roller	4	36	Nut	2
11	Retaining Ring	4	37	Bolt	2
12	Control switch	1	38	Microswitch	1
13	Support Plank	2	39	Bolt	4
14	Nut	2	40	Shaft	2
15	Screw	2	41	Busher	2
16	chopper	1	42	Screw	2
17	Pump	1	43	Washer	2
18	Screw	4	44	Seal Washer	2
19	Bottom plank	1	45	Hollow Screw	1
20	Bolt	1	46	Square Joint	1
21	Connect Plank	1	47	Connection	1
22	Nut	2	48	Pipe	1
23	Bushing	4	49	Pipe	1
24	Grease cup	4	50	Elastic Washer	2
25	Elastic Washer	2	51	Elastic Pin	2
26	Screw	2			

PART LIST OF THE CYLINDER of HIW3.0EU (6000LBS/3000KG)



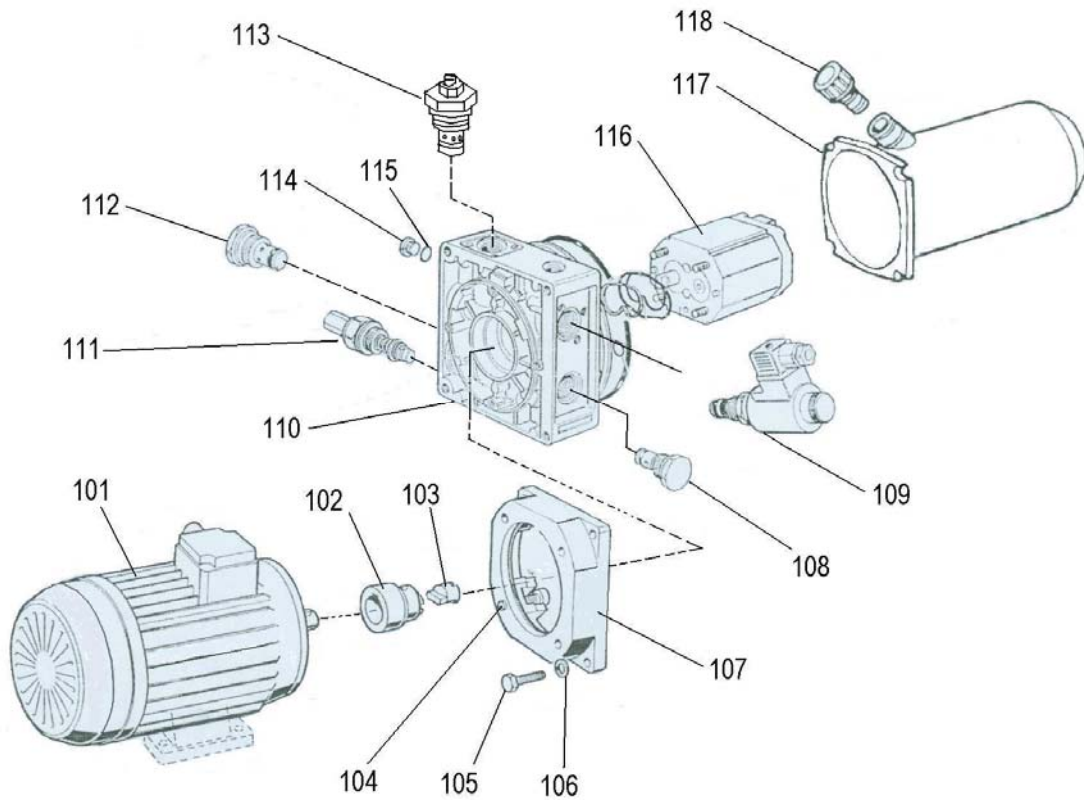
32

No	Description	Quantity	No	Description	Quantity
201	Piston Rod	1	209	Y-Seal	1
202	O-Ring	1	210	Dust Ring	1
203	O-Ring	2	211	Safety Valve	1
204	Piston	1	212	Spring	1
205	Y-Seal	1	213	Core of Valve	1
206	Housing	1	214	Retaining Ring	1
207	Retaining Ring	1	215	Bushing	2
208	Cylinder Cap	1			



PART LIST OF Pump Station (HIW1.0/HIW2.0/HIW4.0)

No	Description	Qty.	No	Description	Qty.
101	Motor (0.75KW380V)	1	112	Relief valve	1
102	Bolt	4	113	T port plug	1
103	Central manifold	1	114	O-ring (ϕ 21.2x1.8)	1
104	Check valve	1	115	O-ring (ϕ 87.5x3.55)	1
105	Gear pump	1	116	Throttle valve 1.6l/min (HIW1.0)	1
106	Solenoid valve	1		Throttle valve 3.5l/min(HIW2.0)	
107	Suction filter	1		Throttle valve 4.9l/min(HIW4.0)	
108	Suction angle pipe	1	117	Srews (M5x65)	2
109	Srews M5x15	4	118	Return pipe	1
110	Plastic tank (3.5L)	1	119	Clamp	1
111	Connecter	1	120	Breather cap	1



PART LIST OF Pump Station (HIW3.0)

No	Description	Qty.	No	Description	Qty.
101	Motor (1.5KW380V)	1	111	Relief valve	1
102	Connector	1	112	Throttle valve	1
103	Connector	1	113	Shut-off Valve	1
104	Bolt	4	114	plug	1
105	Bolt	4	115	O-ring	1
106	Elastic Washer	4	116	Gear pump	1
107	Plate	1	117	Oil tank	1
108	Check valve	1	118	Breather cap	1
109	Solenoid valve	1			
110	Central manfoid	1			